

© International Baccalaureate Organization 2024

All rights reserved. No part of this product may be reproduced in any form or by any electronic or mechanical means, including information storage and retrieval systems, without the prior written permission from the IB. Additionally, the license tied with this product prohibits use of any selected files or extracts from this product. Use by third parties, including but not limited to publishers, private teachers, tutoring or study services, preparatory schools, vendors operating curriculum mapping services or teacher resource digital platforms and app developers, whether fee-covered or not, is prohibited and is a criminal offense.

More information on how to request written permission in the form of a license can be obtained from <https://ibo.org/become-an-ib-school/ib-publishing/licensing/applying-for-a-license/>.

© Organisation du Baccalauréat International 2024

Tous droits réservés. Aucune partie de ce produit ne peut être reproduite sous quelque forme ni par quelque moyen que ce soit, électronique ou mécanique, y compris des systèmes de stockage et de récupération d'informations, sans l'autorisation écrite préalable de l'IB. De plus, la licence associée à ce produit interdit toute utilisation de tout fichier ou extrait sélectionné dans ce produit. L'utilisation par des tiers, y compris, sans toutefois s'y limiter, des éditeurs, des professeurs particuliers, des services de tutorat ou d'aide aux études, des établissements de préparation à l'enseignement supérieur, des fournisseurs de services de planification des programmes d'études, des gestionnaires de plateformes pédagogiques en ligne, et des développeurs d'applications, moyennant paiement ou non, est interdite et constitue une infraction pénale.

Pour plus d'informations sur la procédure à suivre pour obtenir une autorisation écrite sous la forme d'une licence, rendez-vous à l'adresse <https://ibo.org/become-an-ib-school/ib-publishing/licensing/applying-for-a-license/>.

© Organización del Bachillerato Internacional, 2024

Todos los derechos reservados. No se podrá reproducir ninguna parte de este producto de ninguna forma ni por ningún medio electrónico o mecánico, incluidos los sistemas de almacenamiento y recuperación de información, sin la previa autorización por escrito del IB. Además, la licencia vinculada a este producto prohíbe el uso de todo archivo o fragmento seleccionado de este producto. El uso por parte de terceros —lo que incluye, a título enunciativo, editoriales, profesores particulares, servicios de apoyo académico o ayuda para el estudio, colegios preparatorios, desarrolladores de aplicaciones y entidades que presten servicios de planificación curricular u ofrezcan recursos para docentes mediante plataformas digitales—, ya sea incluido en tasas o no, está prohibido y constituye un delito.

En este enlace encontrará más información sobre cómo solicitar una autorización por escrito en forma de licencia: <https://ibo.org/become-an-ib-school/ib-publishing/licensing/applying-for-a-license/>.

Environmental systems and societies
Standard level
Paper 2

29 October 2024

Zone A morning | **Zone B** morning | **Zone C** morning

Candidate session number

2 hours

--	--	--	--	--	--	--	--	--	--

Instructions to candidates

- Write your session number in the boxes above.
- Do not open this examination paper until instructed to do so.
- Section A: answer all questions.
- Section B: answer two questions.
- Answers must be written within the answer boxes provided.
- A calculator is required for this paper.
- The maximum mark for this examination paper is **[65 marks]**.



Section A

Answer **all** questions. Answers must be written within the answer boxes provided.

Figure 1(a): Municipal solid domestic waste (MSW) produced versus income level

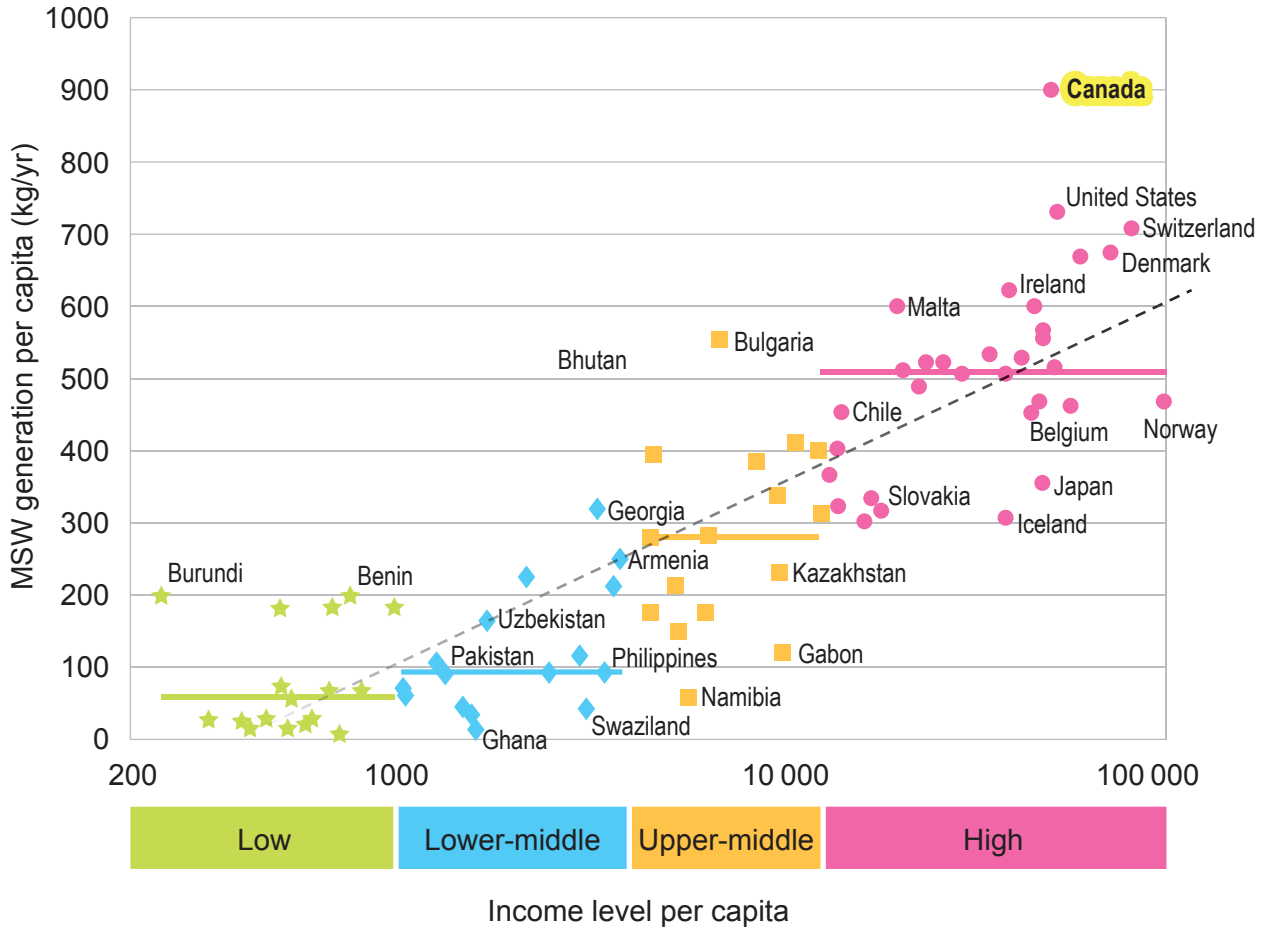
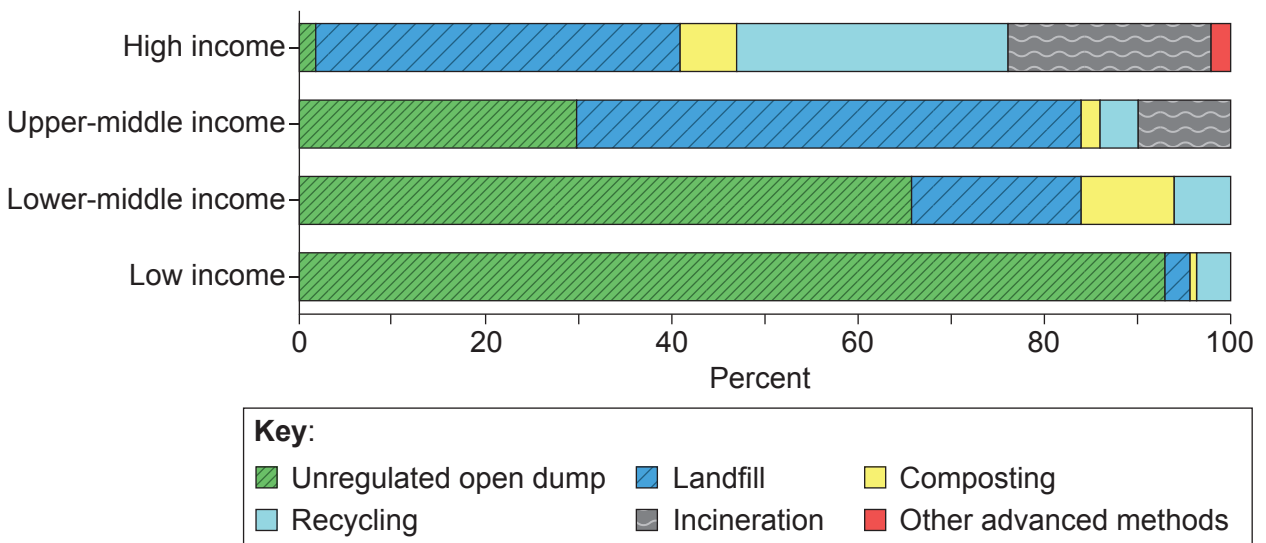


Figure 1(b): Waste disposal methods by per capita income



1. (a) Using **Figure 1(a)**, identify the amount of municipal solid domestic waste generated per capita in Canada. [1]

.....
.....

- (b) Outline **two** strategies that Canada's government could use to reduce the country's per capita waste production. [2]

.....
.....
.....
.....

- (c) (i) Describe the trend shown in the use of landfills as income level increases in **Figure 1(b)**. [2]

.....
.....
.....
.....

- (ii) Suggest **two** reasons for the trend shown in the use of landfills as income level increases in **Figure 1(b)**. [2]

.....
.....
.....
.....

- (d) Outline **one** advantage and **one** disadvantage of using incineration instead of landfills. [2]

.....
.....
.....
.....



Figure 2(a): Diagram showing the expanse of the Mississippi River basin draining into the Gulf of Mexico

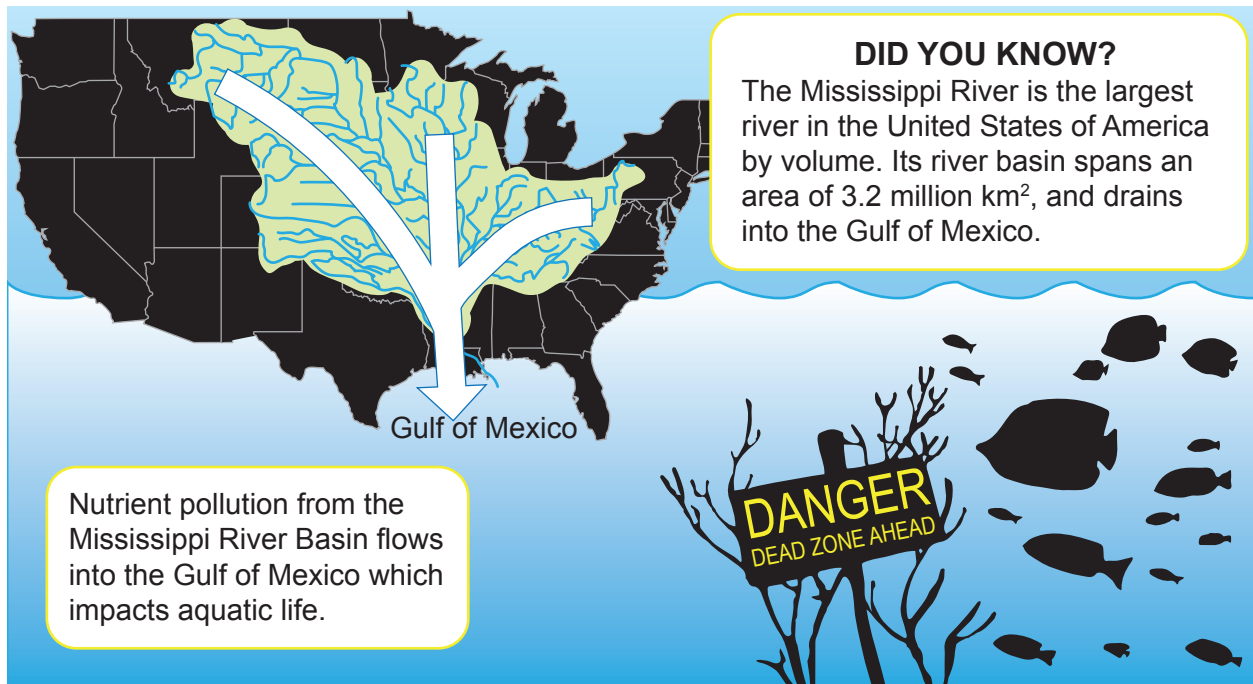
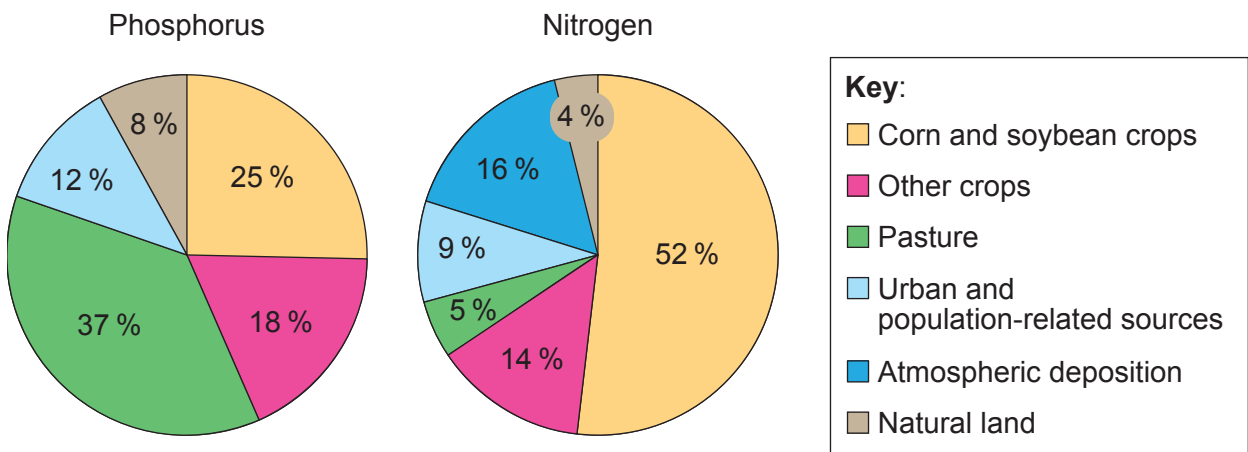


Figure 2(b): Pie charts showing sources of nutrients delivered to the Gulf of Mexico from the Mississippi River



2. (a) Using **Figure 2(b)**, state the source that has the highest contribution of phosphorus delivered to the Gulf of Mexico. [1]

.....
.....

(b) Using **Figures 2(a)** and **2(b)**, outline **two** reasons why nutrient pollution in the Gulf of Mexico is difficult to manage. [2]

.....
.....
.....
.....

(c) Explain how nutrient pollution could impact aquatic food production in the Gulf of Mexico. [4]

.....
.....
.....
.....
.....
.....
.....
.....

(d) Outline **two** management strategies to prevent the release of nutrient pollution into the Mississippi River. [2]

.....
.....
.....
.....



Figure 3(a): A simplified food web in a kelp forest ecosystem

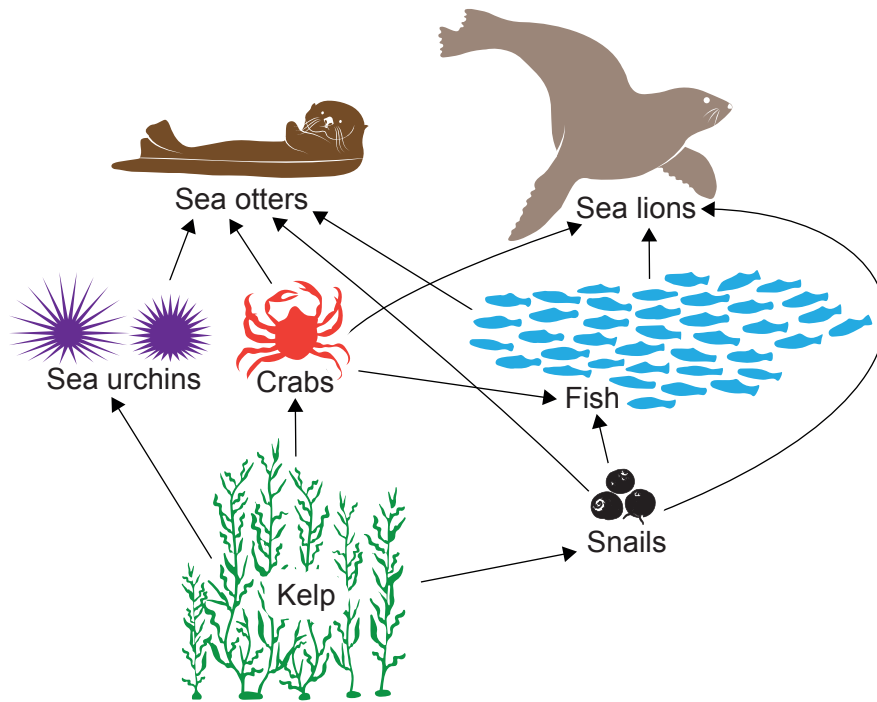
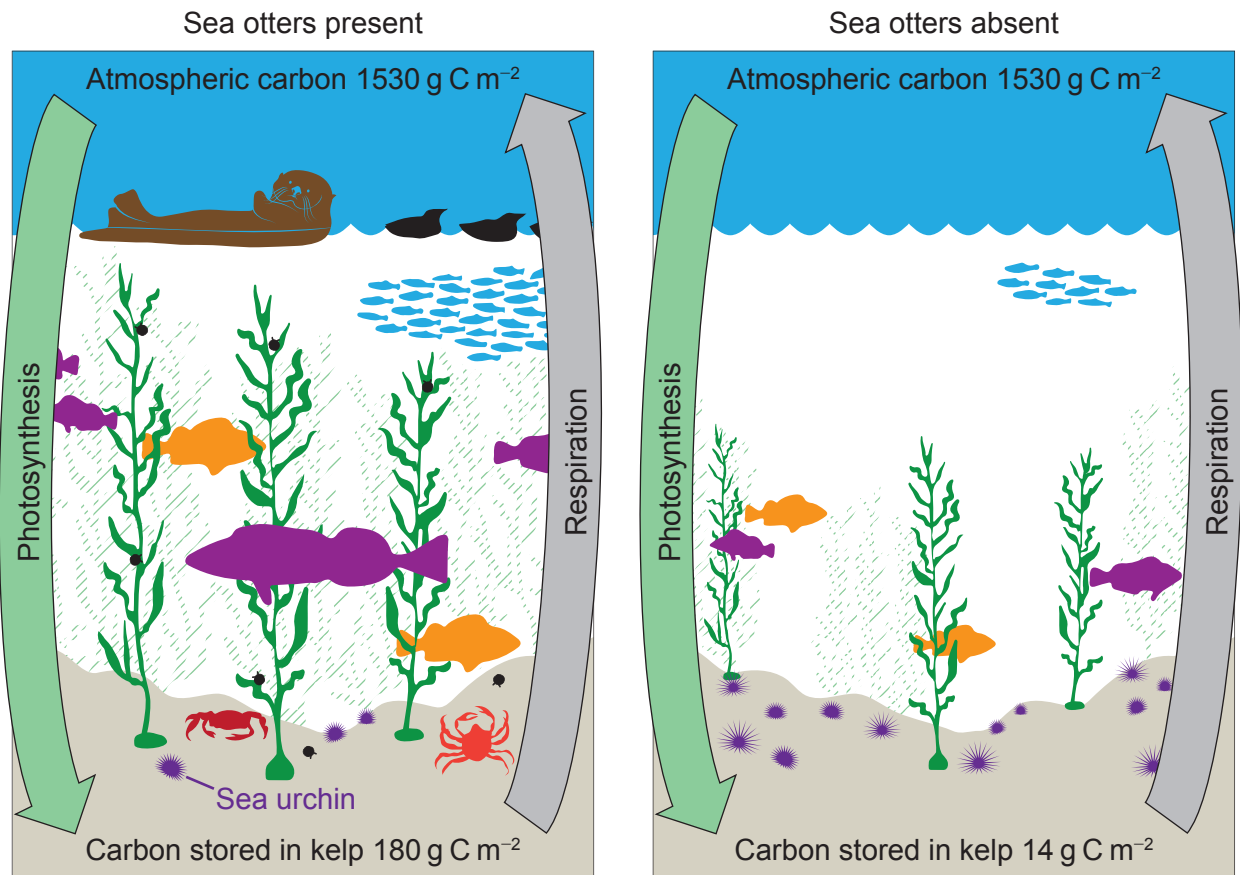


Figure 3(b): Kelp forest ecosystems with and without the presence of sea otters



The arrows indicate the flow of carbon between the atmosphere and the carbon stored in kelp.



3. (a) Calculate the difference between carbon stored in kelp in the ecosystem with and without sea otters. [1]

.....
.....

(b) Outline why sea otters are considered a keystone species. [1]

.....
.....

(c) Explain how sea otters contribute to the resilience of the kelp forest ecosystem. [3]

.....
.....
.....
.....
.....
.....

(d) Outline how the protection of sea otters could help mitigate climate change. [2]

.....
.....
.....
.....



Section B

Answer **two** questions. Answers must be written within the answer boxes provided.

4. (a) Outline **two** transfers and **two** transformations in soil systems. [4]
- (b) Explain how anthropocentric and ecocentric value systems influence how soil resources are managed. [7]
- (c) To what extent are human food production systems more greatly influenced by cultural factors than they are by political, environmental or economic factors? [9]
5. (a) Outline **four** ways in which ecological footprints (EFs) vary significantly by country. [4]
- (b) Explain how life-supporting services provided by ecosystems may be impacted by human activity. [7]
- (c) Human population growth always results in a loss of biodiversity.
Discuss the validity of this statement. [9]
6. (a) Outline the role of clouds in regulating global average temperature. [4]
- (b) Explain how urban air pollution could lead to significant economic losses. [7]
- (c) The *Montreal Protocol on Substances that Deplete the Ozone Layer* (1987) is one of the most successful international agreements on a major environmental issue.
Discuss the validity of this statement. [9]
7. (a) Outline how ocean circulation systems affect climate. [4]
- (b) Explain how plate tectonics have impacted speciation of organisms. [7]
- (c) To what extent could the changing value of freshwater resources lead to conflict between different societies? [9]



A large rectangular area containing horizontal dotted lines for writing.



24EP09

Turn over

A large rectangular area containing horizontal dotted lines for writing.



24EP10

A large rectangular area containing 25 horizontal dotted lines for writing.



24EP11

Turn over

Dotted lines for writing.



24EP12

A large rectangular area containing 25 horizontal dotted lines, intended for writing or drawing.



24EP13

Turn over

A large rectangular area containing horizontal dotted lines for writing, typical of a ledger or notebook page.



A large rectangular area containing 25 horizontal dotted lines for writing.



24EP15

Turn over

A large rectangular area with a dotted grid pattern, intended for handwritten notes or answers.



A large rectangular area containing horizontal dotted lines for writing.



24EP17

Turn over

Ruled area with horizontal dotted lines for writing.



A large rectangular area containing horizontal dotted lines for writing.



24EP19

Turn over

Blank lined writing area with horizontal dotted lines.



24EP20

A large rectangular area containing horizontal dotted lines for writing.



24EP21

Turn over

A large rectangular area containing 25 horizontal dotted lines for writing.



24EP22

Large rectangular area with horizontal dotted lines, intended for writing or drawing.



24EP23

Disclaimer:

Content used in IB assessments is taken from authentic, third-party sources. The views expressed within them belong to their individual authors and/or publishers and do not necessarily reflect the views of the IB.

References:

Figure 1(a) United Nations Environment Programme (2015). *Global Waste Management Outlook*. Nairobi.

Figure 1(b) Kaza, Silpa; Yao, Lisa C.; Bhada-Tata, Perinaz; Van Woerden, Frank. 2018. *What a Waste 2.0: A Global Snapshot of Solid Waste Management to 2050*. Urban Development. © Washington, DC: World Bank. <http://hdl.handle.net/10986/30317>. Licensed under Creative Commons BY 3.0 IGO. <https://creativecommons.org/licenses/by/3.0/igo/>. Source adapted.

Figure 2(b) U.S. Geological Survey, Department of the Interior/USGS.

All other texts, graphics and illustrations © International Baccalaureate Organization 2024



24EP24